

# MCCALL'S FREE PROJECT

## BEDSIDE ORGANIZER



**SUGGESTED FABRICS:** Home Decorator Fabrics, Denim, Twill, Ticking

**YOU WILL NEED:**

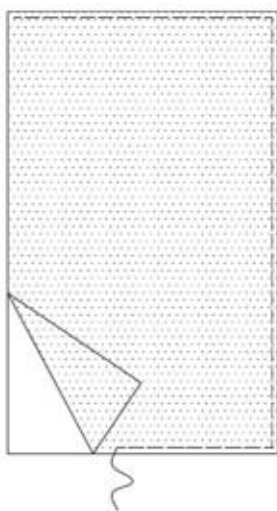
Fabric: 45"- 54" wide – 1 ½ yd.

Sew-in Interfacing: 21"- 25" wide – 2 ⅛ yd.

Velcro®: Three 1" (2.5cm) pieces

Please read all the instructions before you start your project.

All seam allowances are ½" (13mm) unless otherwise indicated.

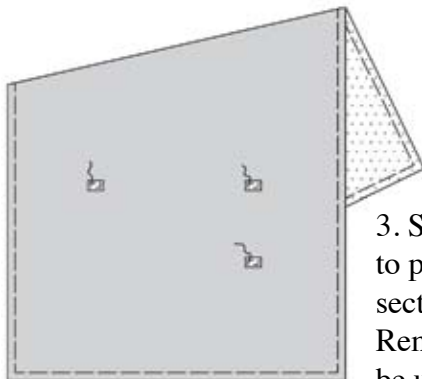


1. Baste Interfacing to wrong side of each Front and Back section, having raw edges even.

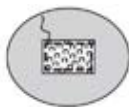
2. Cut three pieces of Velcro®, each 1" (2.5cm) long. Separate each piece.



4. With right sides together, stitch front and back sections together, leaving an opening for turning.



3. Stitch loop half (soft side) to positions on one interfaced section. This will be the front. Remaining sections will be used for pockets.

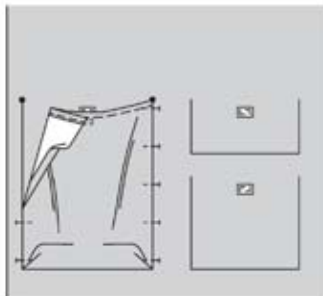


5. Turn right side out. Slipstitch opening edges together. Press.

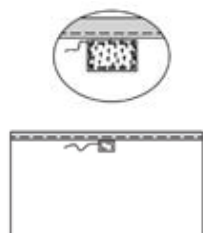
## BEDSIDE ORGANIZER pg. 2



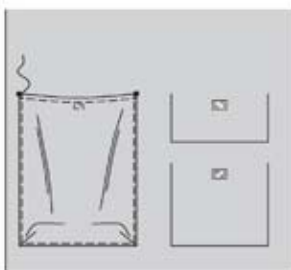
6. Press under  $\frac{1}{4}$ " (6mm) on upper edge of Large Pocket. Turn hem to inside on hemline. Press. Stitch hem in place close to pressed under edge.



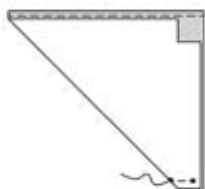
10. Turn pocket up, turning under  $\frac{1}{2}$ " (1.3cm) on sides and pinning along placement lines, matching circles.



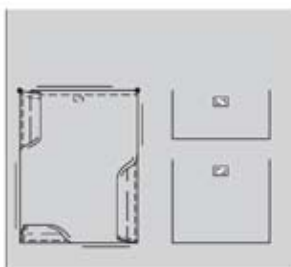
7. Stitch hook half (firm side) of Velcro<sup>®</sup> to inside of pocket at position indicated.



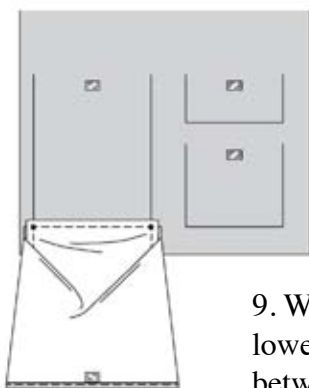
11. Edgestitch close to sides and lower edge of pocket, pivoting at corners.



8. Fold each corner as illustrated. Stitch from folded edge to circle. Turn right side out. Press.



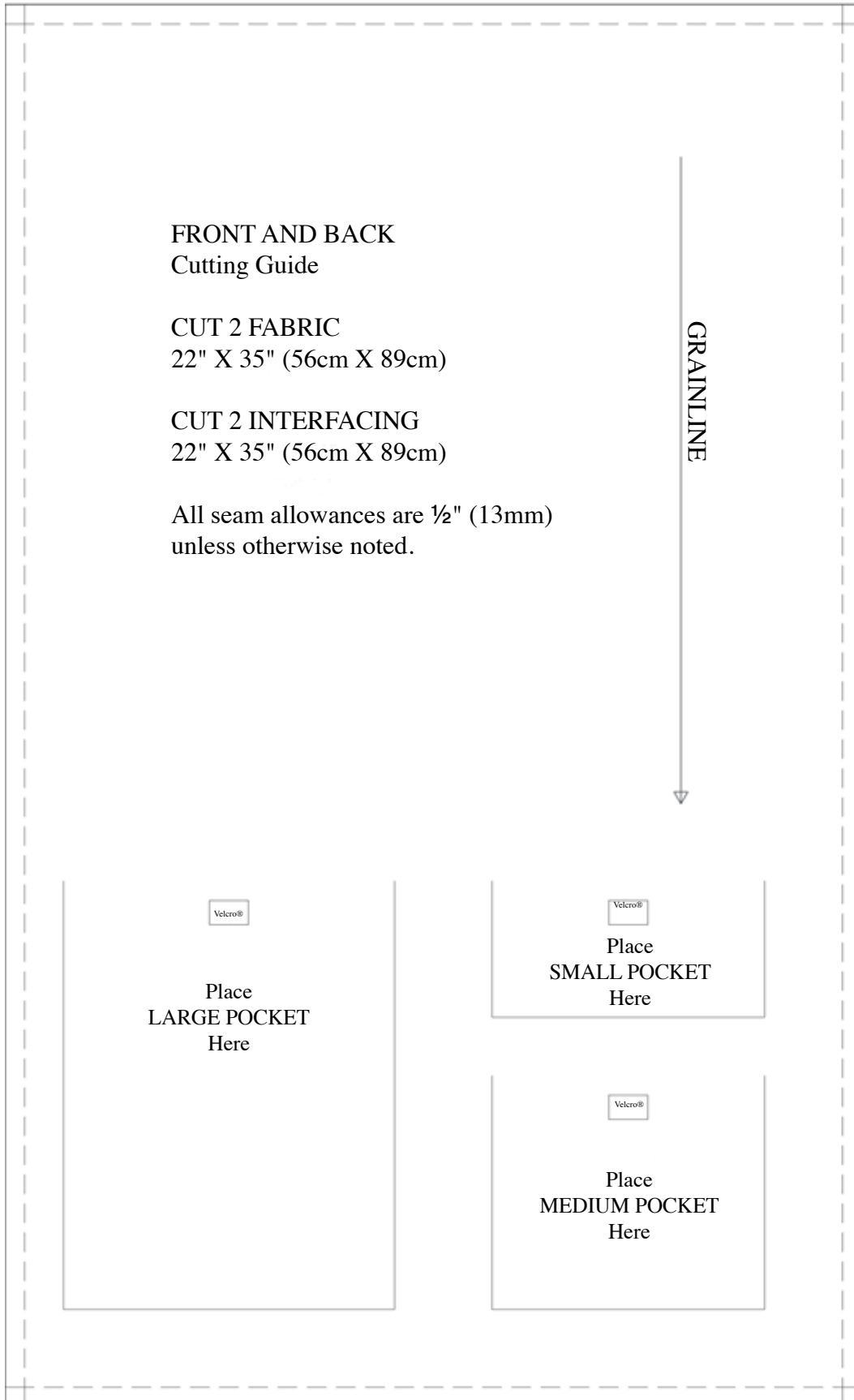
12. Fold lower edge of pocket on foldline and bring over stitching on lower edge. Press. Fold and press side edges in same manner, tucking in corner folds as shown.



9. With right sides together, stitch lower edge of pocket to front between small circles along placement line as shown.

13. Prepare and apply Small Pocket and Medium Pocket in same manner. Edgestitch outer edges of caddy.

**NOTE: PATTERN PIECES ARE 1/4 SCALE.  
ENLARGE 400% OR DRAW YOUR OWN BY  
USING THE DIMENSIONS LISTED ON THE PIECES.**



**NOTE: PATTERN PIECES ARE 1/4 SCALE.  
ENLARGE 400% OR DRAW YOUR OWN BY  
USING THE DIMENSIONS LISTED ON THE PIECES.**

